

MANNINGTON
C O M M E R C I A L

taking shape now

CARPET TILES
24" X 24"
(60.96 X 60.96cm)

Web: fixitdesign.ae
Phone: [+971554722980](tel:+971554722980)
Email: info@fixitdesign.ae



Cookies n Cream (14107)



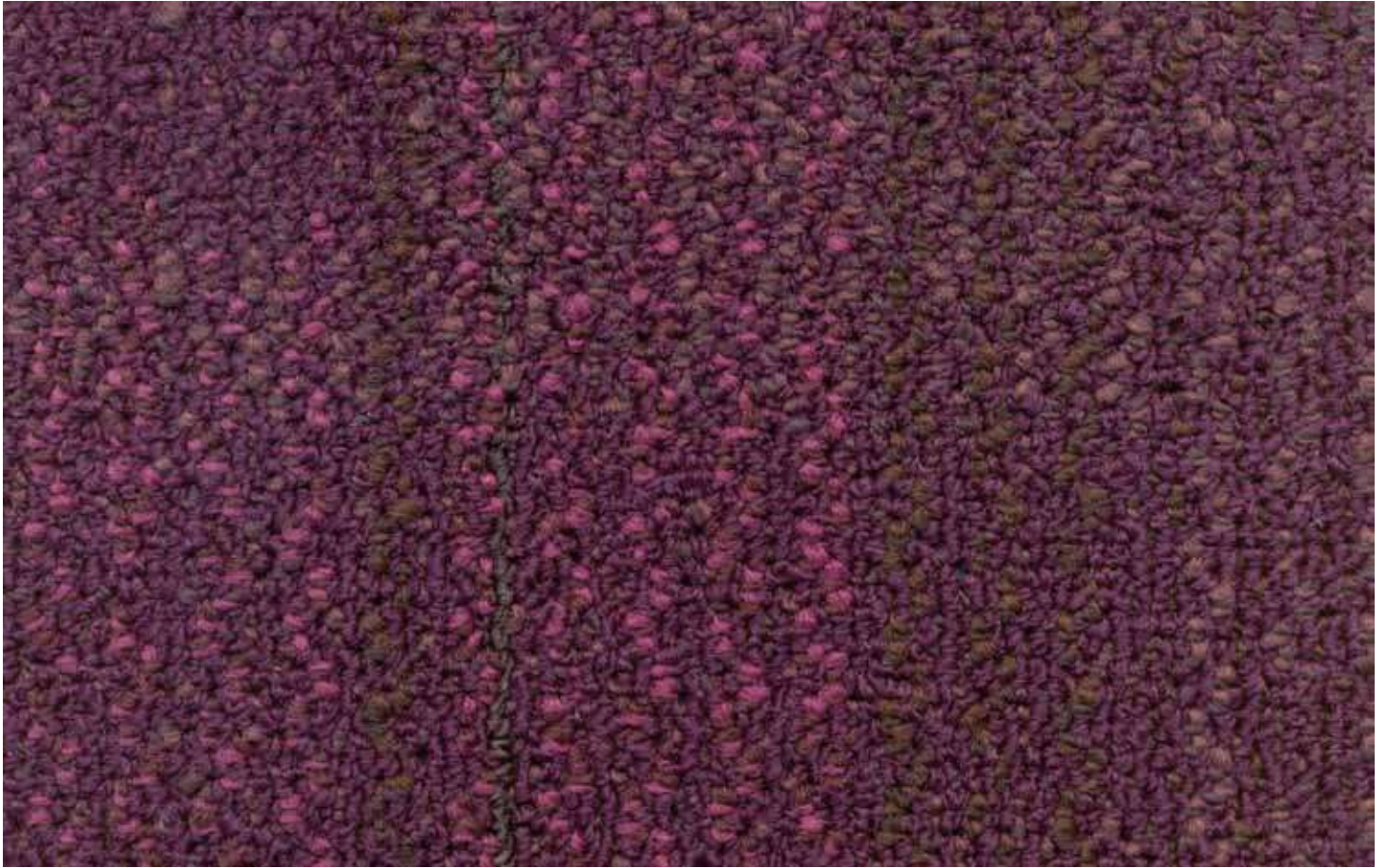
Tapioca Pudding (42102)



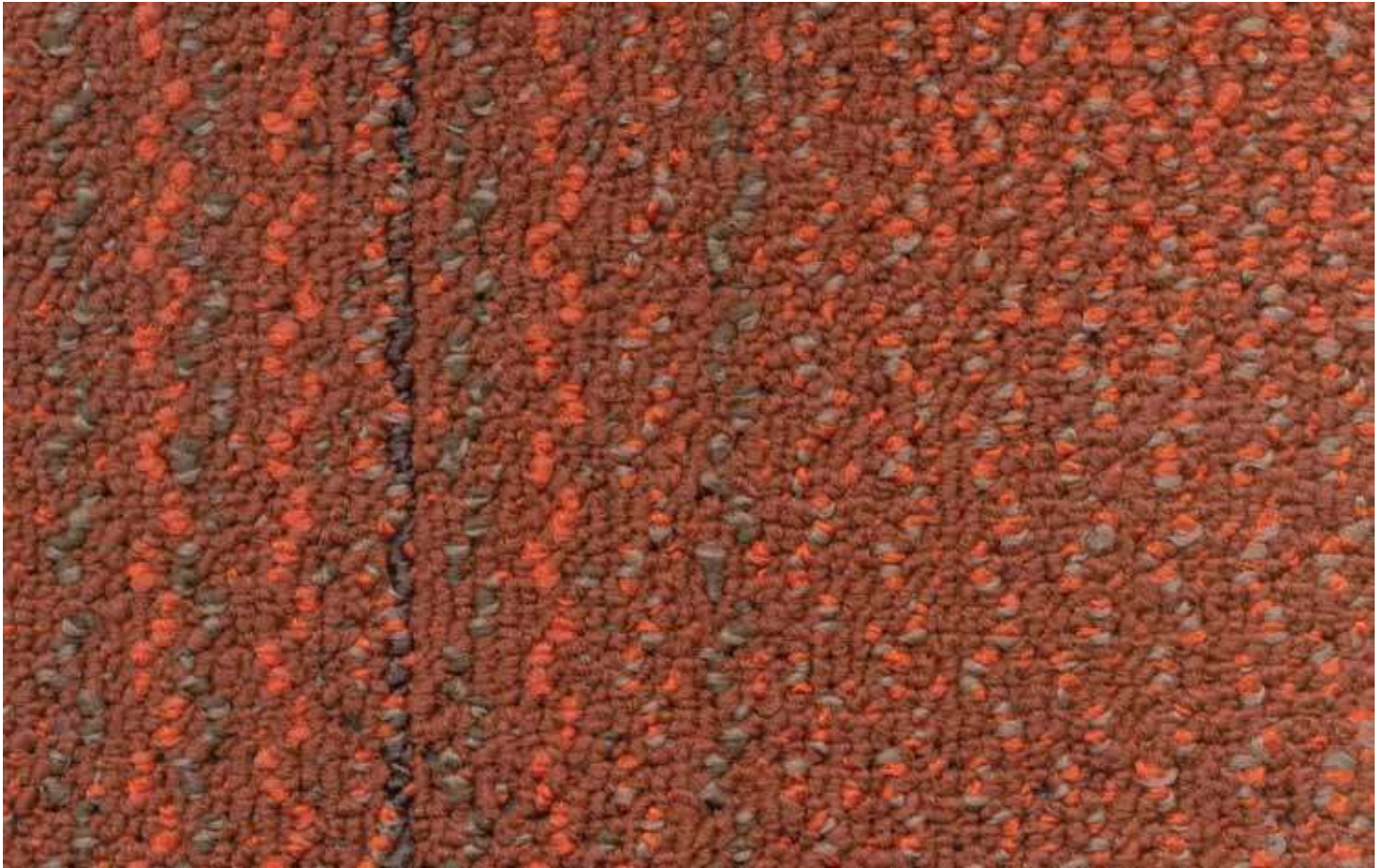
Chai Latte (83098)



Vanilla (51091)



Eggplant (24096)



Strawberry (73094)

MANNINGTON



Product Specification

Style	:	Taking Shape Now
Construction	:	Patterned loop
Face fiber	:	Mannington Quantum Nylon
Dye method	:	Solution / Yarn
Gauge	:	1/12 (47.24 per 10cm)
Stitches per inch	:	7.6 (29.92 per 10cm)
Pile thickness	:	.084 (2.13mm)
Tufted yarn weight	:	16 oz./sq.yd. (542 g/m ²)
Primary substrate	:	100% Synthetic
Secondary backing	:	infinity® Modular - contains pre-consumer recycled content. Certified NSF/ANSI-140 Gold.
Installation methods	:	Random (other installation methods at owner's discretion)
Methanamine pill test (ASTM-D-2859)	:	Passes
Flooring radiant panel test (ASTM-E-648)	:	Class I (Direct Glue)
N.B.S. smoke chamber test (ASTM-E-662)	:	< 450 (Flaming Mode)
Electrostatic propensity test (AATCC 134)	:	< 3.0 KV
Available width	:	24" x 24" (60.96 x 60.96cm)
Average density	:	6,857 (254.79Kg/m ³)
CRI indoor air quality control green label plus ID	:	GLP7616 infinity®

Good Form Collection contains Mannington Quantum Nylon™.

Limited Lifetime Wear and Backing Warranty, Infinity® Modular. Limited 10-Year SafeGuard SR™ Stain Resistant Warranty.

Specifications are based on averages from normal manufacturing tolerances. Such variations do not affect product performance. Protective chair pads are recommended under office chairs with roller casters to preserve appearance and to avoid premature wear.

As with all quality carpets, slight variation in color may occur from dye lot to dye lot.

Backings or other materials may be changed without prior notice when shortages occur or when technological advancements provide improved product performance. This product is intended solely for use as an indoor floor covering and is not recommended or sold for any other purpose.

Note: The inherent characteristics of these patterns can result in double-dark or double-light lines at the seam or along the edges. Pattern run off or bias within industry tolerances is also an inherent characteristic of patterned carpet. These are not considered manufacturing defects, and as such, should be considered when selecting a carpet installation method.